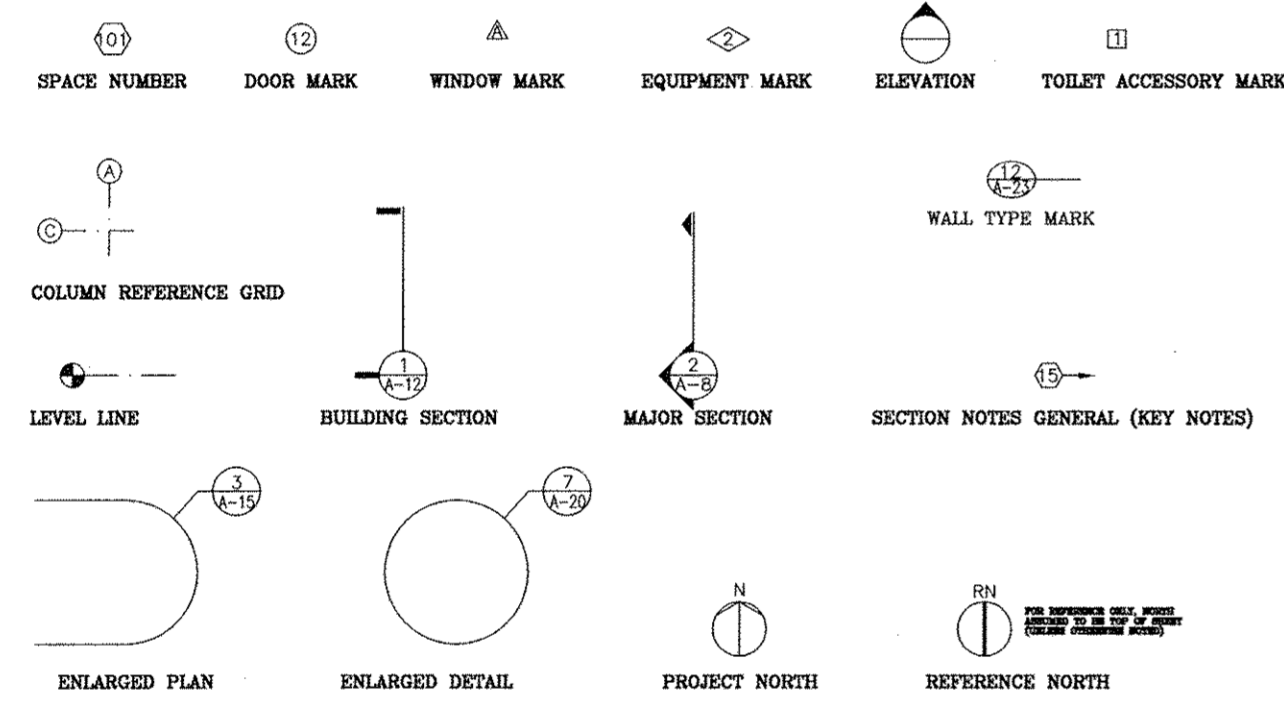


COCA COLA BUILDING SUITE 201 RENOVATION

LAGRANGE, GEORGIA



LEGEND OF SYMBOLS



ABBREVIATIONS

⊙	At	JAN.	Janitor
A.B.	Anchor Bolt	J.B.	Joist Bearing
A.C.	Air Conditioner	J.S.	Joist
ACOUST.	Acoustical	J.T.	Joist
ALUM.	Aluminum		
ARCH.	Architectural	LAV.	Lavatory
A.T.	Acoustical Tile	LLV.	Long Leg Vertical
B.C.	Bottom of Curb	MAS.; MSRY	Masonry
BLK.	Block	MCS	Modular Cabinet System
BOTT.	Bottom	MECH.	Mechanical
		MIN.	Minimum
CER.	Ceramic		
C.G.	Corner Guard	N	North
CHM.	Custom Hollow Metal	NA	Not Applicable
C.I.	Curb Inlet	NA	Not In Contract
	Centerline	NTS	Not to Scale
CL.	Closet		
CMU.	Concrete Masonry Unit	O.C.	On Center
C.O.	Clean Out	OPP.	Opposite
COL.	Column		
CONC.	Concrete		
CONST.	Construction	PL	Plate
CONT.	Continuous	PT	Pressure Treated
C.T.	Ceramic Tile	PEJ	Premolded Expansion
CHR.	Coat & Hat Rack	PLAST	Plaster
C.J.	Control Joint	PSF	Pounds Per Square Foot
		PSI	Pounds Per Square Inch
D: DIAM.	Diameter	R	Radius
DF	Drink Fountain	REF	Refrigerator
DI	Drain Inlet	REQ'D	Required
DN	Down	RL	Roof Level
DRV.	Driver	RM	Room
DS	Downspout	RT	Resilient Tile
DWGS.	Drawings	RW	Regular Weight
DWLS.	Dowels		
DR	Drawer		
E.J.; EXP. JT.	Expansion Joint	SQ.	Square
EL.; ELEV	Elevation	SIM	Similar
EQ	Equal	SLV	Short Leg Vertical
EQUIP.	Equipment	S.M.	Sheet Metal
E.F.I.S.	Exterior Finish Insulation System	STL	Steel
		STO.; STOR	Storage
		STRUCT.	Structural
		SH	Shelves
F.E.	Fire Extinguisher	TC	Teacher Cabinet
F.H.	Fire Hose	T.C.	Top of Curb
FES	Fire Extinguisher Sign	TD	Turn Down
FIN.	Finish	TFF	Top of Finished Floor
FLEX.	Flexible	TFS	Top of Finished Slab
FLR.	Floor	T & G	Tongue and Groove
FT.	Foot	T.M.	Transitional Material
FTG.	Footing	TP	Top of Pavement
		T/S	Top of Steel
		TYP.	Typical
GA	Gauge	U.N.O.	Unless Noted Otherwise
G.C.	General Contractor		
GYP. BRD.	Gypsum Wallboard		
H	Height		
HC	Handicapped	V.C.J.	Veneer Control Joint
HCM	Hollow Concrete Masonry	VERT.	Vertical
HORIZ.	Horizontal	VRS	Varies
HW	Hand Wash	WVC	Vinyl Wall Covering
I.D.	Inside Diameter	W	Width
IND.	Industrial	W/	With
INV.	Invert	W.C.	Water Cooler
		WD	Wood
		WWF	Welded Wire Fabric

INDEX OF SHEETS

G-1 COVER SHEET, LEGEND OF SYMBOLS, LEGEND OF CONSTRUCTION MATERIALS, ABBREVIATIONS, LEGEND OF SHEETS

ARCHITECTURAL

A1-1 PLANS AND DETAILS
A5-1 WINDOW DETAILS
A8-1 INTERIOR ELEVATIONS

ARCHITECT'S STAMP STATE OF GEORGIA 7575 REGISTERED ARCHITECT
SET NO.
SIGNATURE REQ'D ENGINEER'S STAMP

RENOVATION
OF
SUITE 201
COCA COLA BUILDING
LAGRANGE,
GEORGIA

COVER SHEET, LEGEND OF SYMBOLS,
LEGEND OF CONSTRUCTION MATERIALS,
ABBREVIATIONS, INDEX OF SHEETS

SMITH DESIGN GROUP, INC.
307 Church Street
LaGrange
Phone (706) 882-5511
Suite B
Georgia
Fax (706) 883-7777



DRAWN
JTS

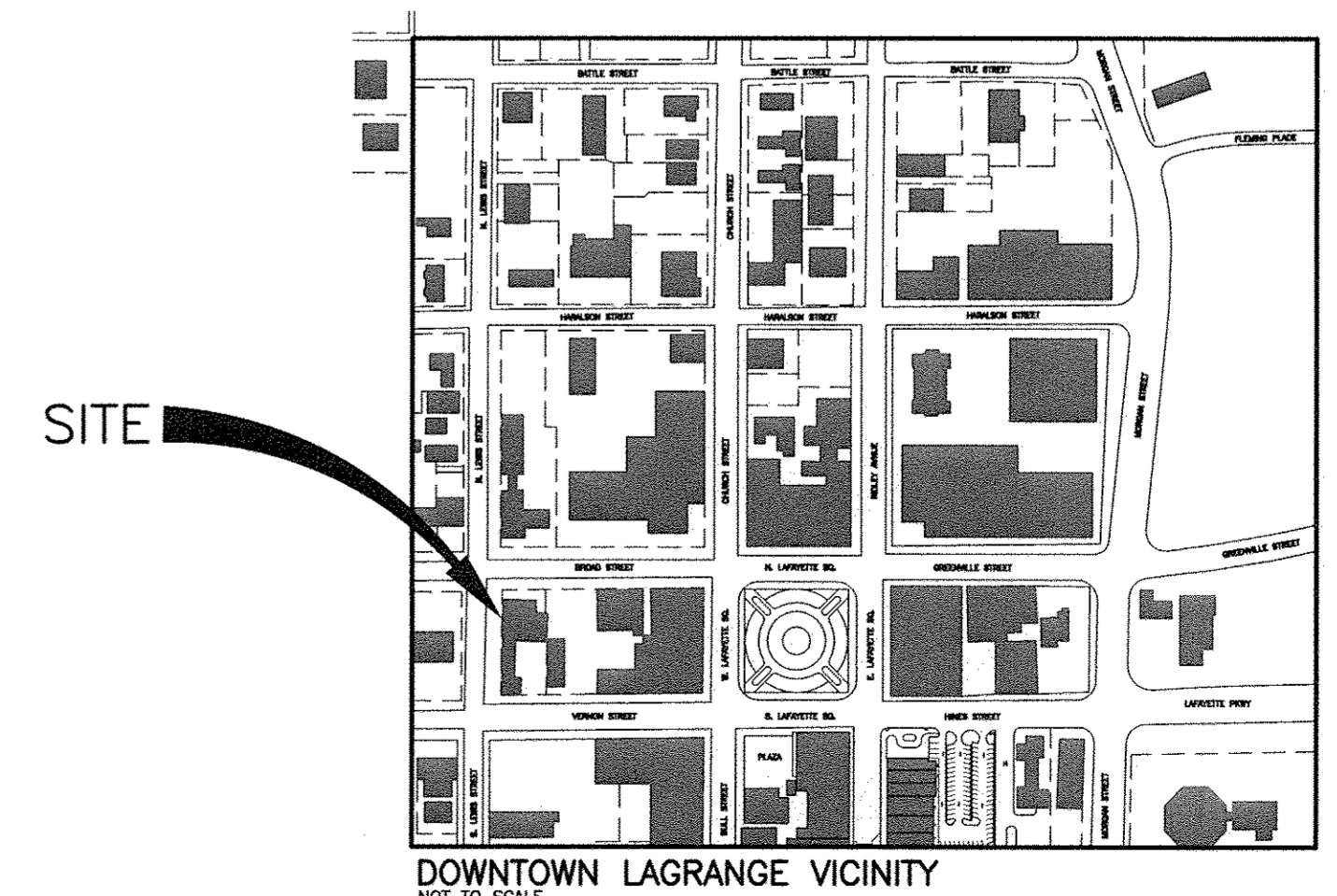
CHECKED
GMS

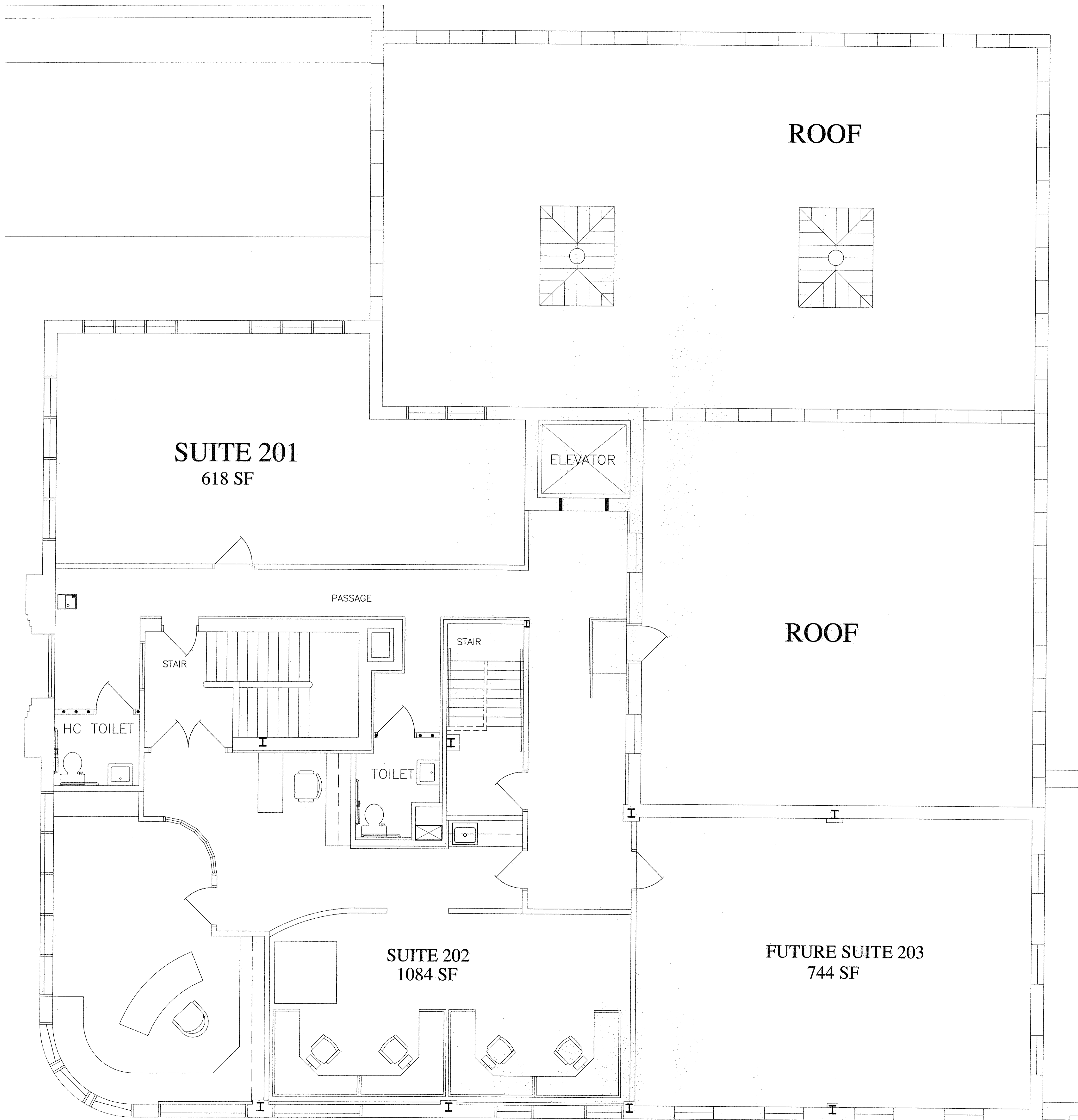
JOB NO.
0803

DATE
10 JAN 2008


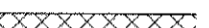


SHEET

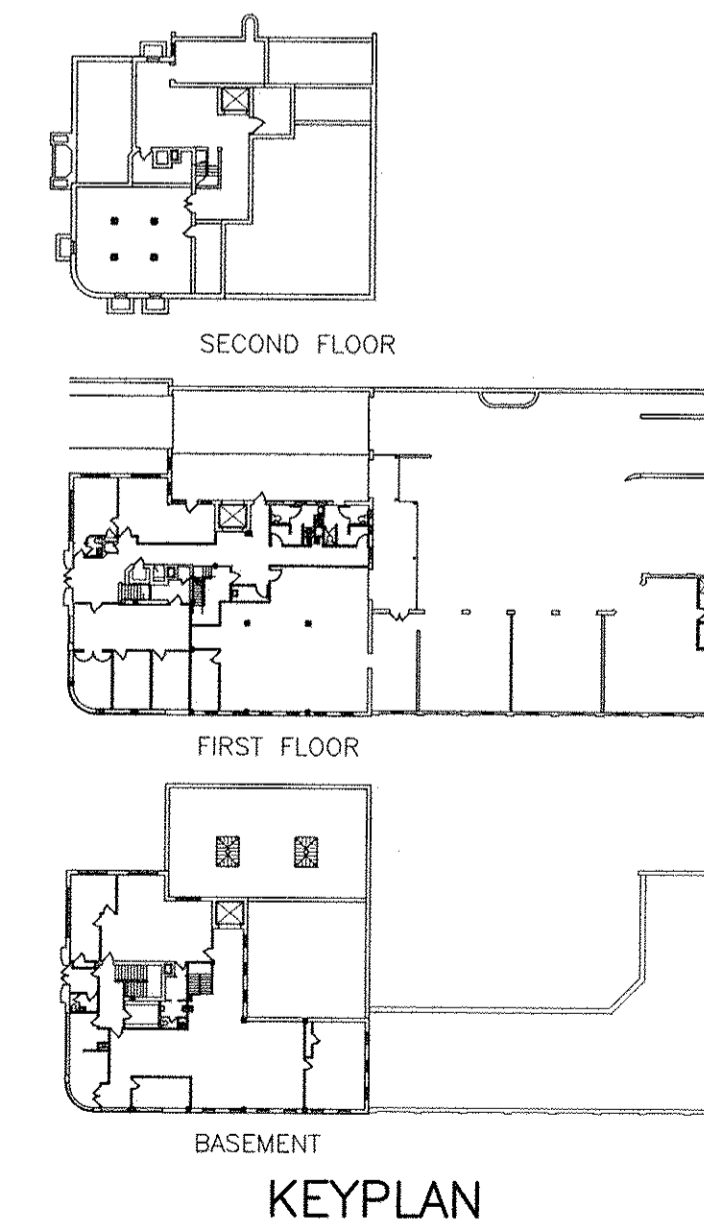
G-1



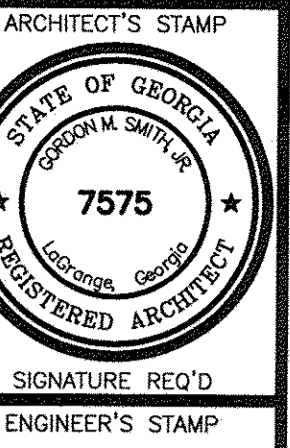
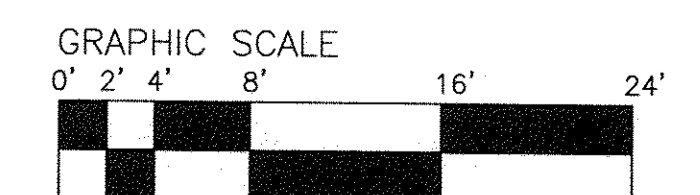
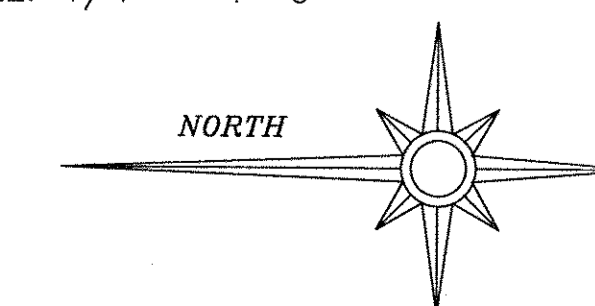


LEGEND OF WALLS

-  EXISTING WALL TO REMAIN
-  NON-RATED METAL STUD PARTITION
SEAL TIGHT AGAINST CONCRETE DECK ABOVE. SEAL AROUND ALL PENETRATIONS.
SEE WALL TYPE 1/A2-5.
-  ONE-HOUR RATED FIRE PARTITION. SEAL TIGHT AGAINST CONCRETE DECK ABOVE. SEAL AROUND ALL PENETRATIONS. SEE WALL TYPE 2/A2-5.
-  ONE-HOUR RATED BRICK AND METAL STUD PARTITION. SEE 7/A2-5.



SECOND FLOOR PLAN — EXISTING
SCALE: 1/4" = 1'-0"



SIGNATURE REQ'D
ENGINEER'S STAMP

RENOVATION
FOR
SUITE 201
COCA COLA BUILDING
LAGRANGE, GEORGIA

PROJECT TITLE

SHEET TITLE
SECOND FLOOR PLAN — EXISTING

SMITH DESIGN GROUP, INC.
307 Church Street
LaGrange
Georgia
Phone (706) 882-5511 Fax (706) 883-7777



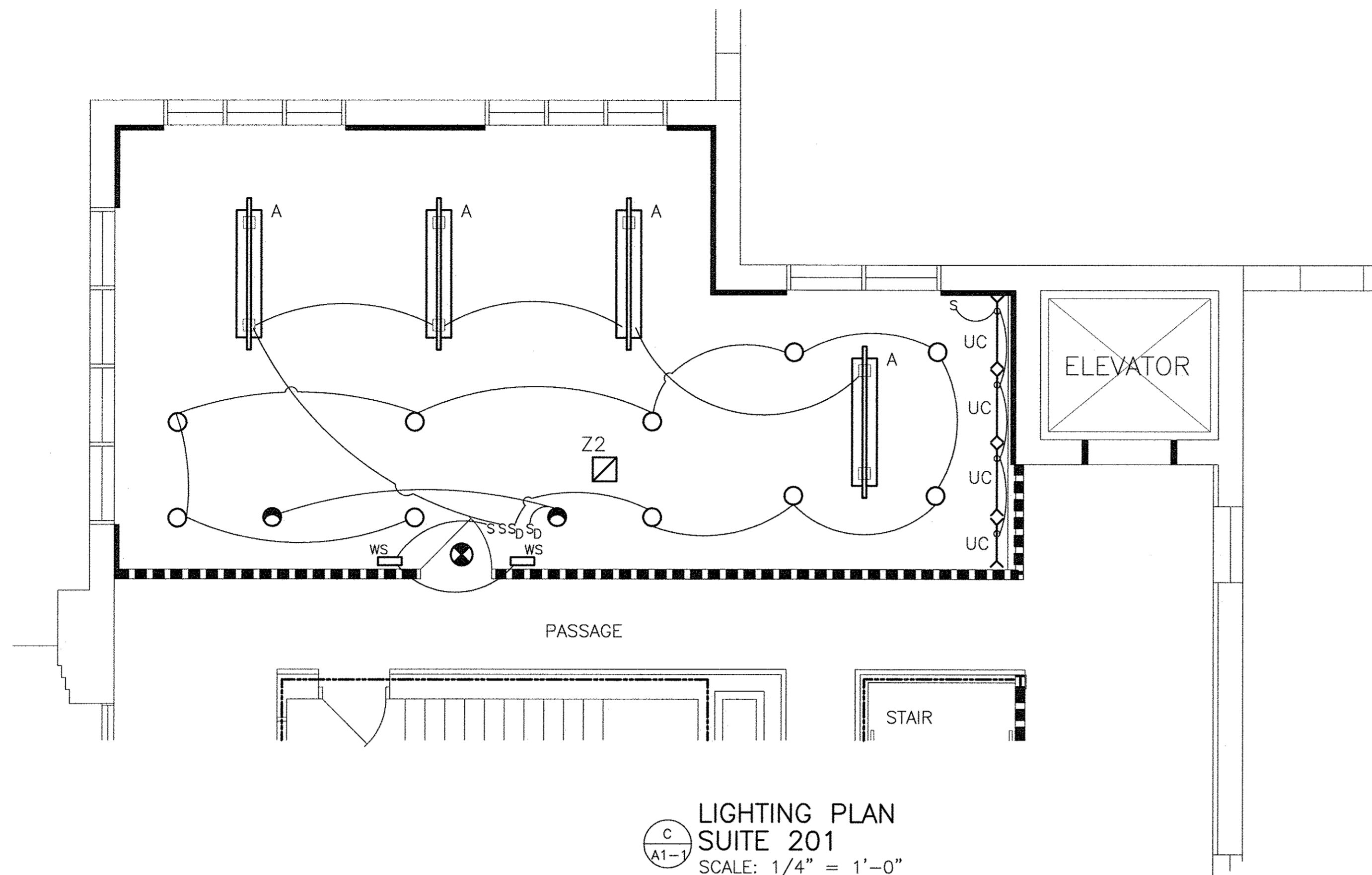
DRAWN
JTS

CHECKED
GMS

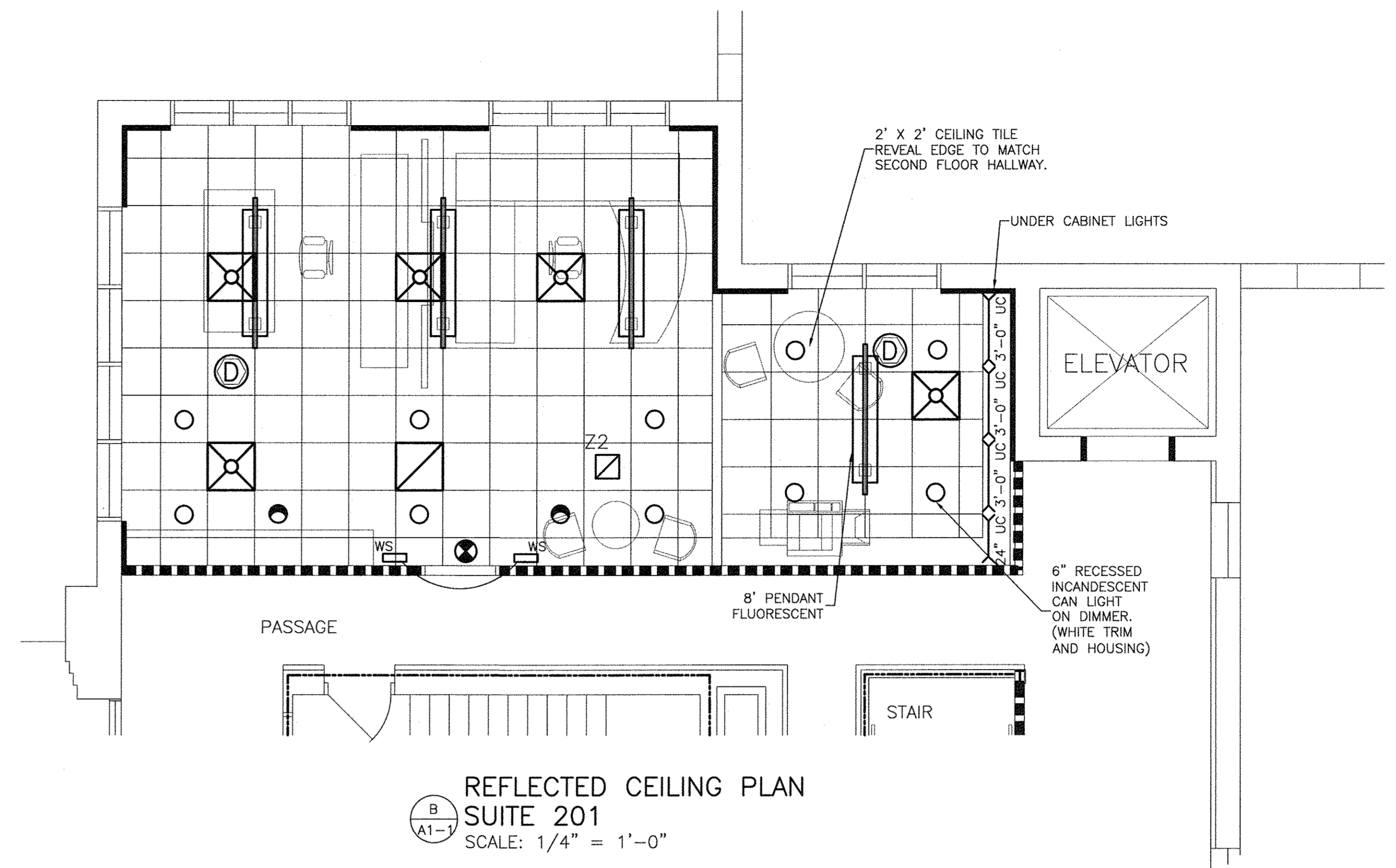
JOB NO.
0803

DATE
09 JAN 2008

SHEET
A1-0



LIGHTING PLAN
SUITE 201
 SCALE: 1/4" = 1'-0"



REFLECTED CEILING PLAN
SUITE 201
 SCALE: 1/4" = 1'-0"

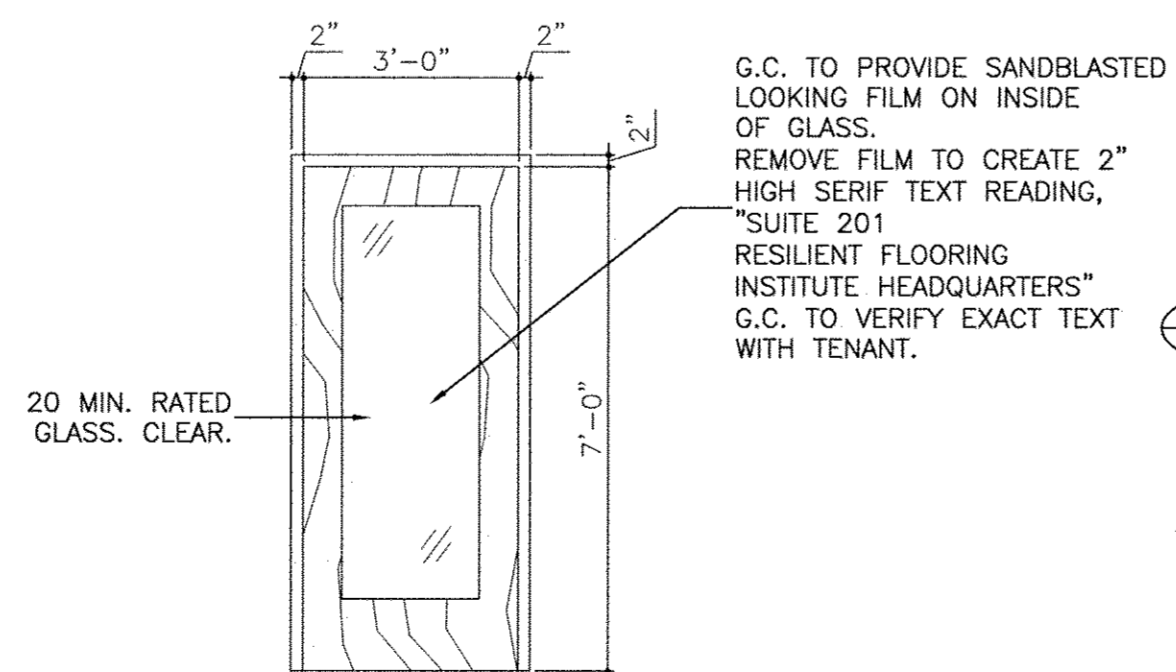
- LEGEND**
- UC — LOW PROFILE UNDER CABINET LIGHT W/ LENS. 3' & 2' LENGTHS.
 - ⊕ — DUPLEX OUTLET
 - ⊕ — QUAD OUTLET, ISOLATED GROUND
 - ⚡ — PHONE — CAT 5; DATA — CAT — 6 WIRING BY ELECTRICAL CONTRACTOR. TERMINATIONS BY TENANT. PROVIDE BOX AND 1" CONDUIT TO ABOVE CEILING.
 - ⊙ — CEILING MOUNTED SMOKE DETECTOR TIED TO EXISTING SYSTEM
 - WS — WALL SCONCE — CB5100-1F38 (120V)-BA-SPD BY VISA LIGHTING PHONE 1-800-788-VISA
 - A — PENDANT FIXTURE — CP3790-2FS54 (120V)-BA-BA PHONE 1-800-788-VISA
 - Z2 — Z2 — CEILING MOUNTED SQUARE LENSED EMERGENCY EGRESS LIGHTING UNIT COMPLETE WITH AUTOMATIC CHARGER AND 90 MINUTE LEAD CALCIUM BATTERY, TWO 8W HALOGEN LAMPS, TIME-DELAY OFF AND SELF DIAGNOSTIC SYSTEM. PROVIDE FLUSH MOUNTING KIT. CONNECT TO UNSWITCHED SOURCE. VOLTS: 120₂₇₇ INPUT VA IN:20 LAMP: PER MANUF MANUFACTURED BY LITHONIA ELSQM-2L/FRK SERIES
 - — RECESSED ADJUSTABLE WALL WASHER. WHITE TRIM AND HOUSING
 - — 6" RECESSED INCANDESCENT FIXTURE WITH WHITE TRIM AND HOUSING ON DIMMER.
 - ⊗ — EDGE LIGHT EXIT SIGN

NOTE:
 G.C. TO PROVIDE CASH ALLOWANCE OF \$1,800 FOR PURCHASE AND INSTALLATION OF FLOOR COVERING IN ENTIRE SUITE.
 G.C. TO INSTALL RB623 WOOD BASE AND SHOE THROUGHOUT SPACE. STAIN GRADE.

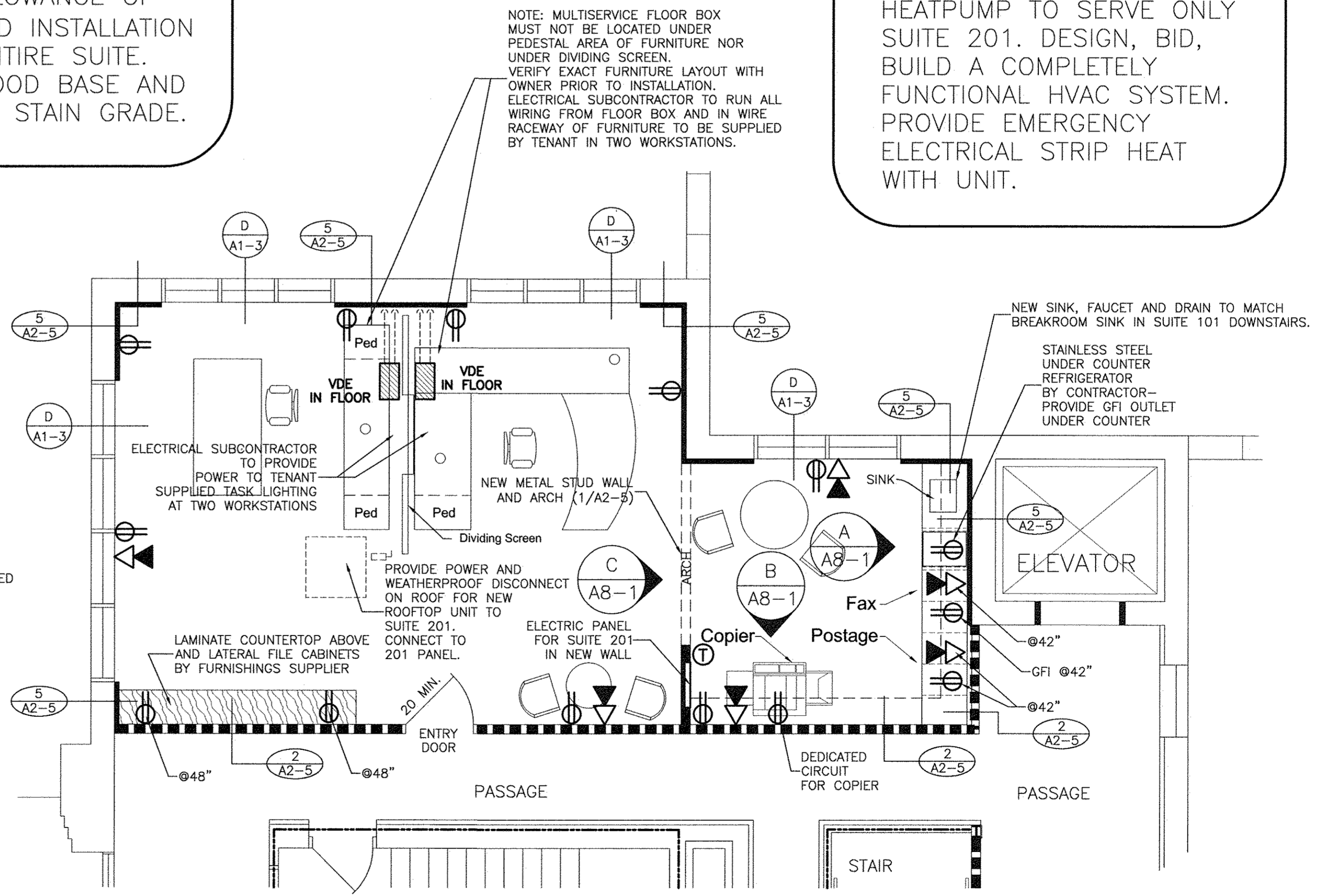
HVAC SUBCONTRACTOR:
 PROVIDE NEW ROOFTOP HEATPUMP TO SERVE ONLY SUITE 201. DESIGN, BID, BUILD A COMPLETELY FUNCTIONAL HVAC SYSTEM. PROVIDE EMERGENCY ELECTRICAL STRIP HEAT WITH UNIT.

MULTI-SERVICE FLOOR BOXES AND FITTINGS:

- A. Utilize flush-in-floor power/communications/data box, labeled per UL #514, NEMA OS-1, NFPA 70-370. Stamped steel concrete/waterproof box, with high/low voltage divider and pre-pour adjustable mounting feet. Top cover shall be thermoplastic duplex/telephone coverplate of color as selected by architect. Install wiring devices.
- B. Manufacturers: Hubbell 3sfb Series; Steel City 664 Series; Walkerbox rfb Series.
- C. Applications: Utilize where box will be flush mounted. In floor or slab.



ENTRY DOOR
 SCALE: 3/8" = 1'-0"
 (DOOR AND FRAME TO BE 20 MIN RATED)



RENOVATION/ELECTRICAL PLAN
SUITE 201
 SCALE: 1/4" = 1'-0"

NOTE:
 ELECTRICAL SUBCONTRACTOR TO PROVIDE 2-1 1/2" CONDUITS FROM TELEPHONE / DATA ENTRY TO BUILDING TO SUITE 201 ABOVE CEILING.



RENOVATION FOR SUITE 201 COCA COLA BUILDING LAGRANGE, GEORGIA

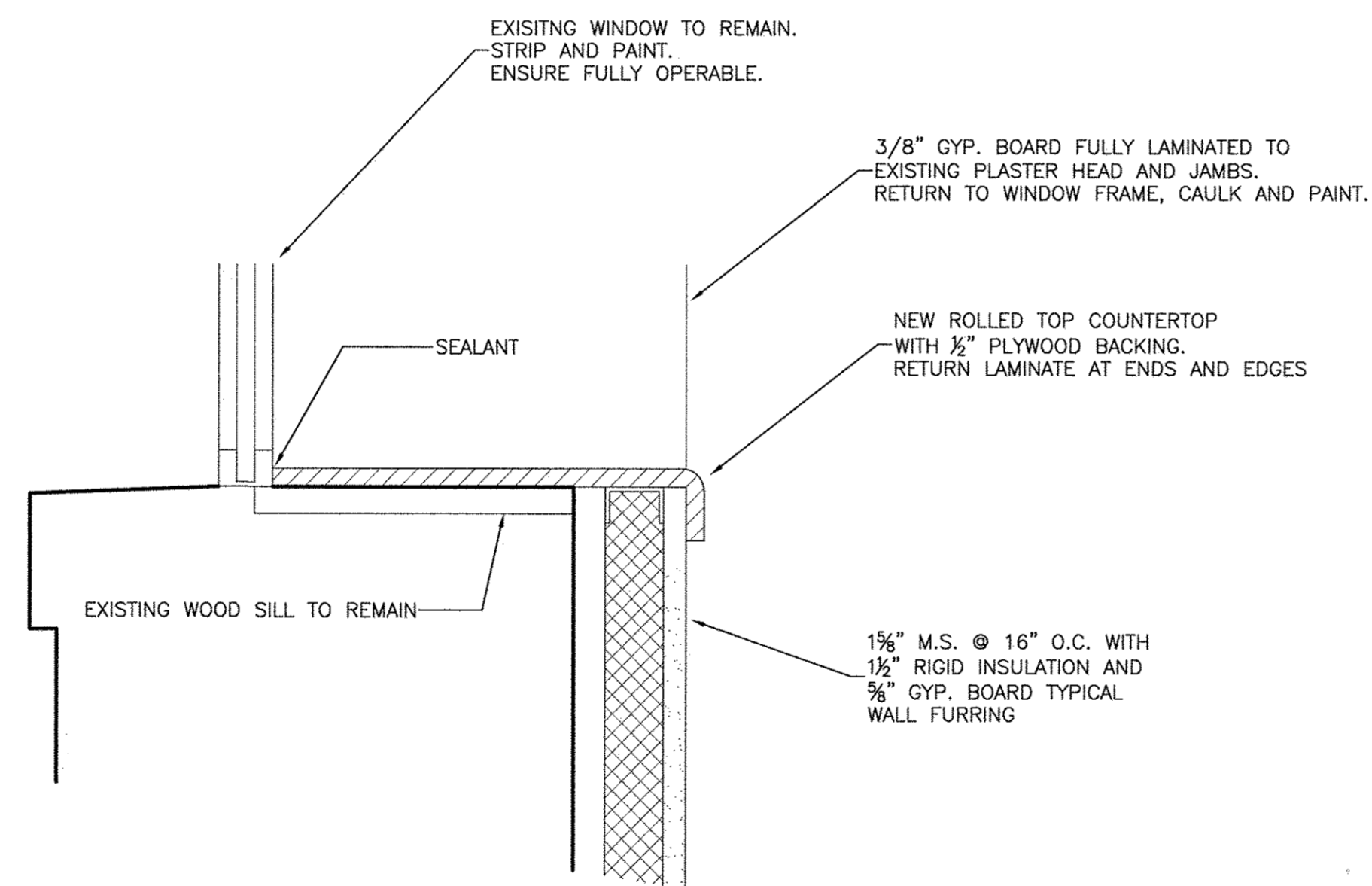
PLANS AND DETAILS

SMITH DESIGN GROUP, INC.
 Suite B
 Georgia
 307 Church Street
 LaGrange
 Phone (706) 882-6511 Fax (706) 883-7777

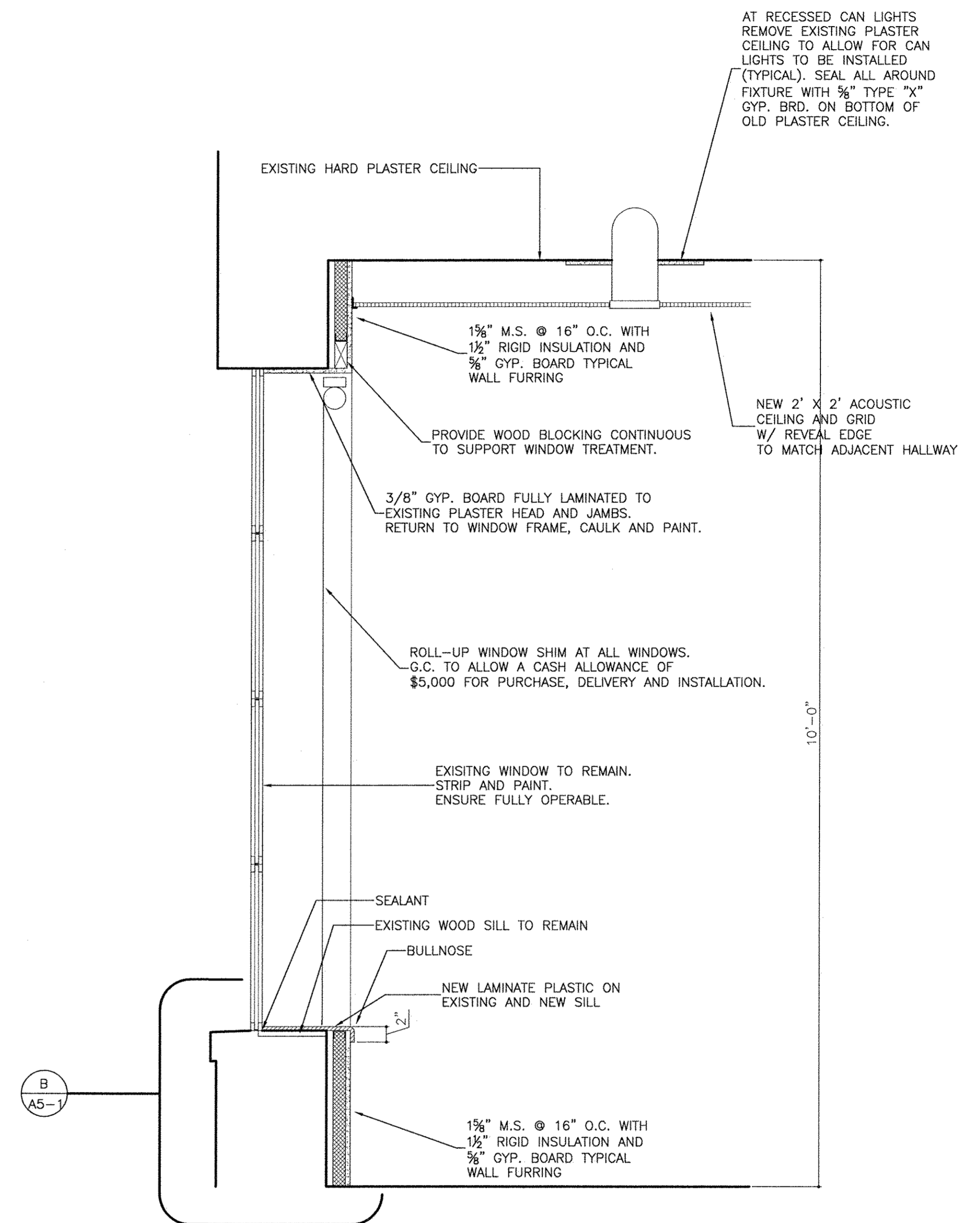


0803
 DATE
 10 JAN 2008

A1-1



B
A5-1
SILL DETAIL
SCALE: 3" = 1'-0"



A
A5-1
WINDOW DETAIL
SCALE: 1" = 1'-0"

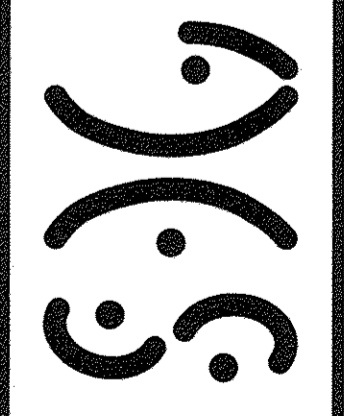


SIGNATURE REQ'D
ENGINEER'S STAMP

RENOVATION FOR SUITE 201 COCA-COLA BUILDING LAGRANGE, GEORGIA

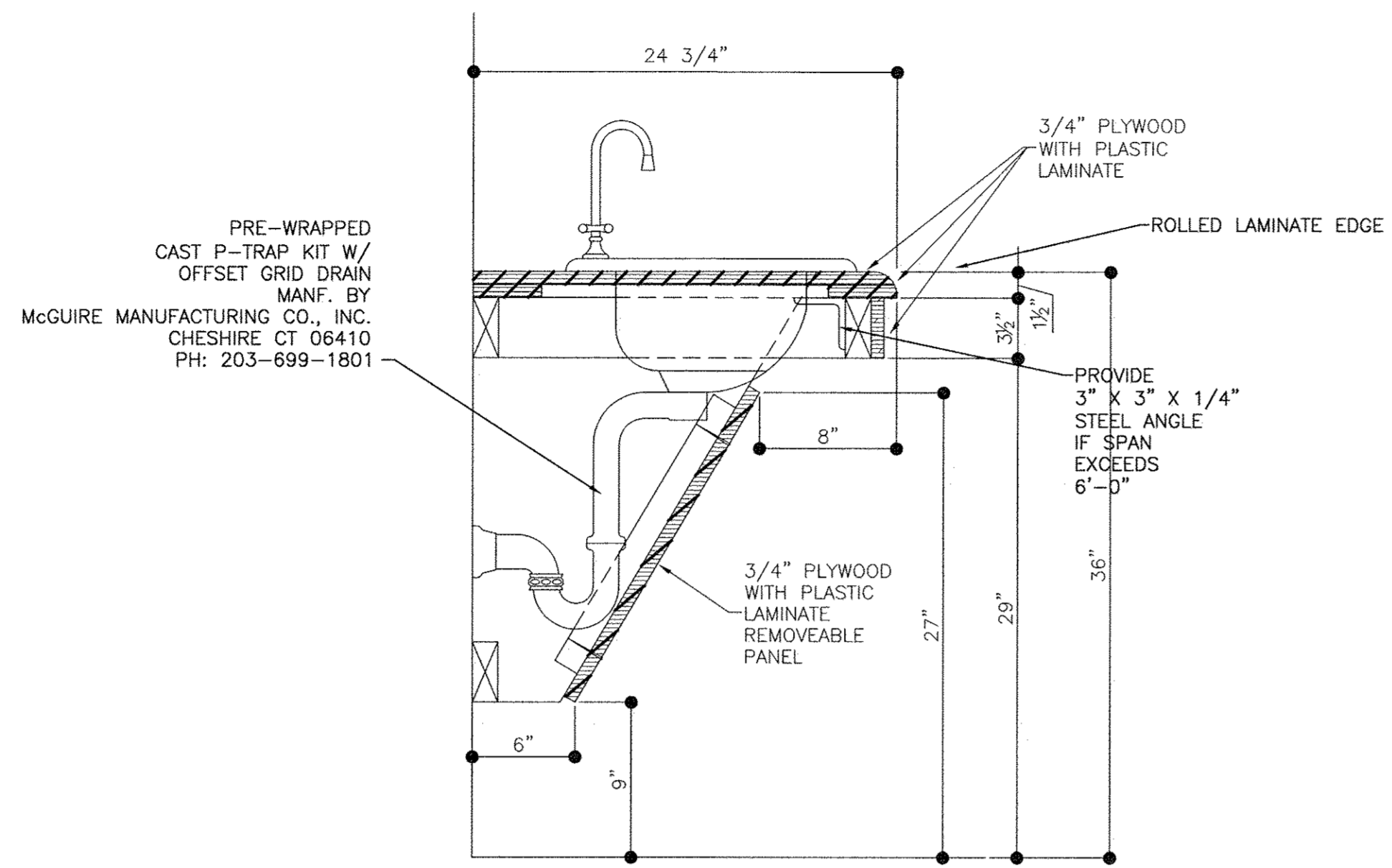
WINDOW DETAILS

SMITH DESIGN GROUP, INC.
307 Church Street
LaGrange, Georgia
Phone (706) 882-5511
Fax (706) 883-7777

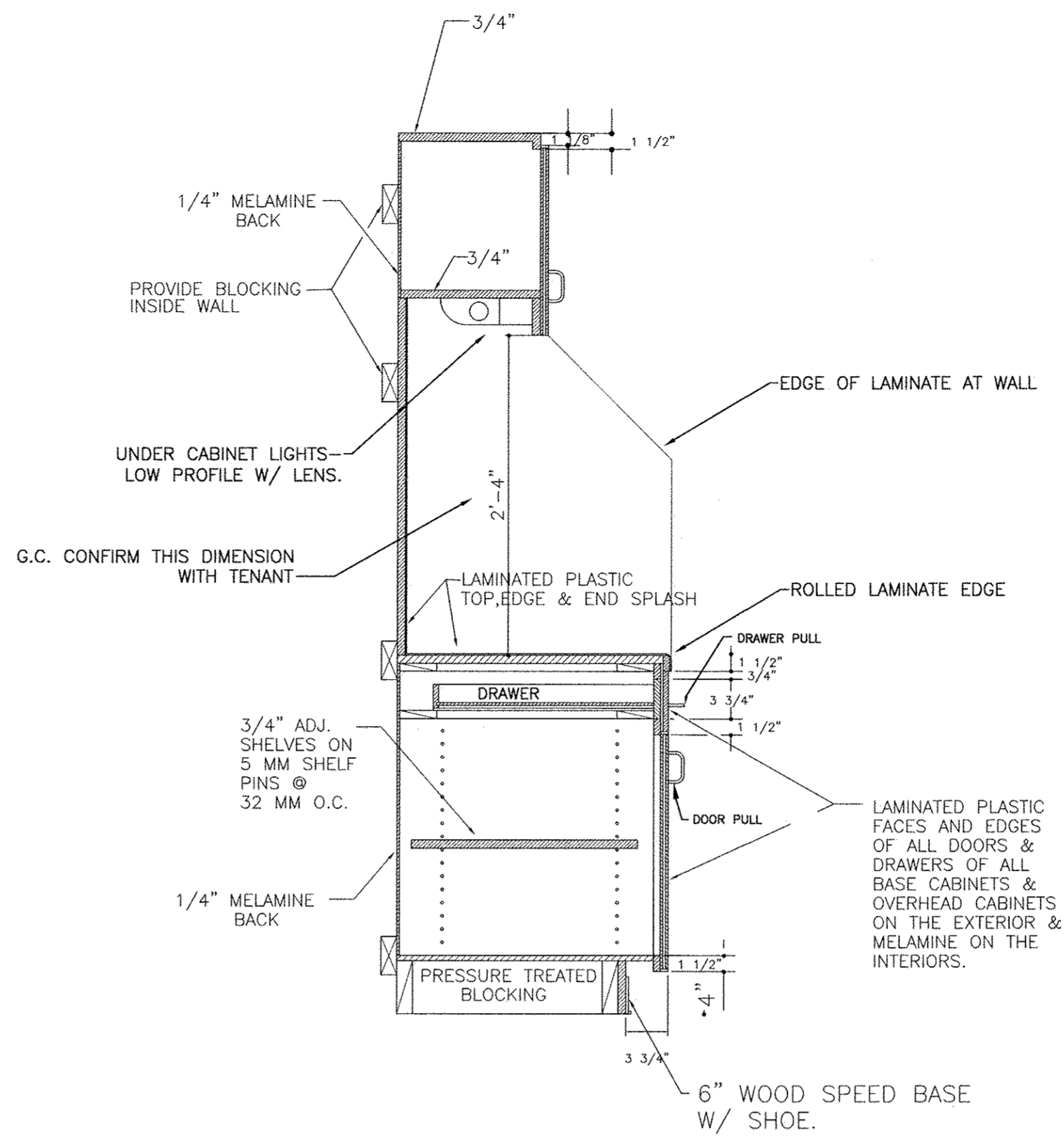


DRAWN: JTS
CHECKED: GMS
JOB NO.: 0803
DATE: 10 JAN 2008

SHEET
A5-1



1 ACCESSIBLE BASIN GUARD DETAIL
SCALE: 1 1/2" = 1'-0"

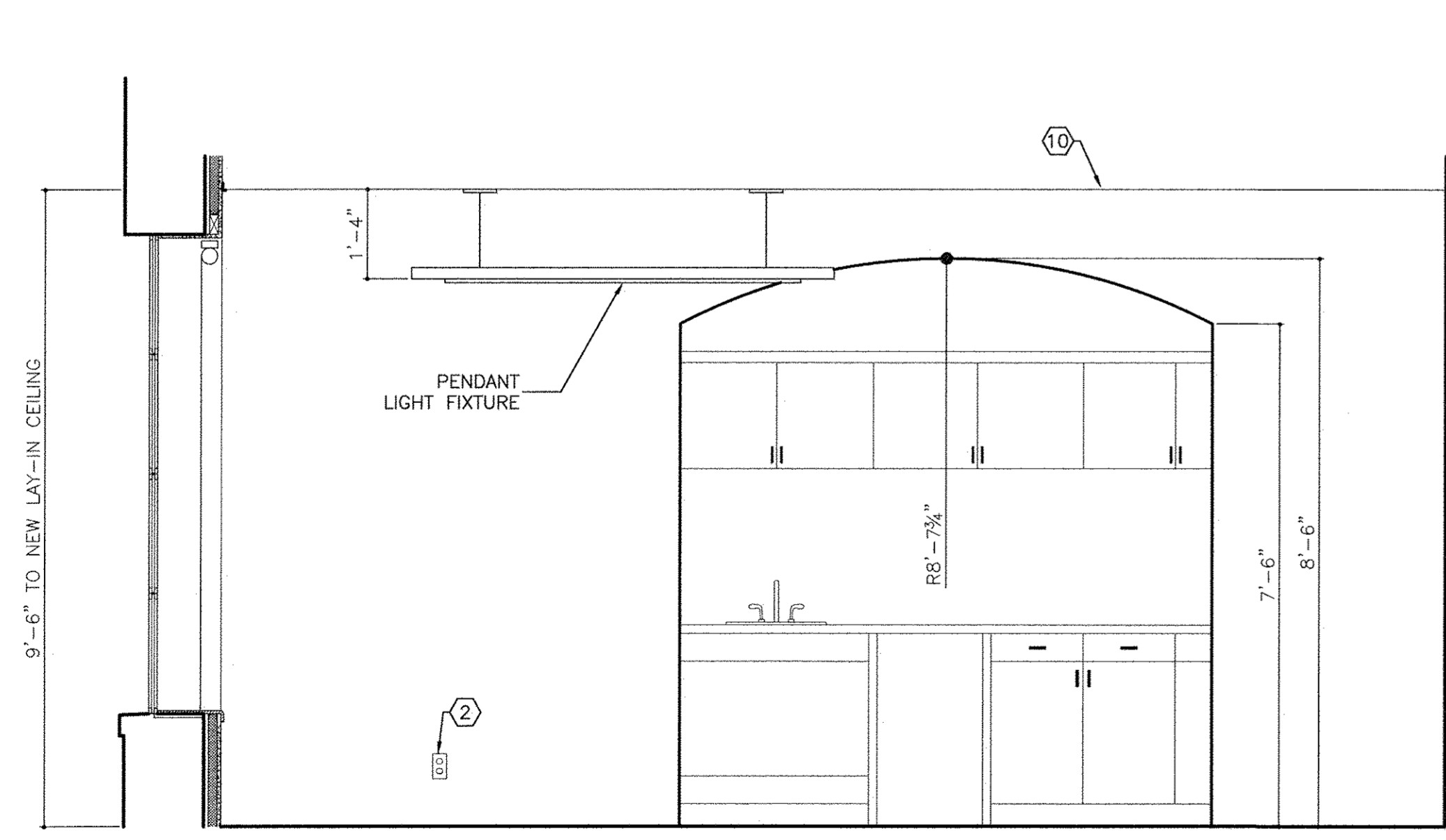


2 TYPICAL CABINET CONSTRUCTION
SCALE: 1" = 1'-0"

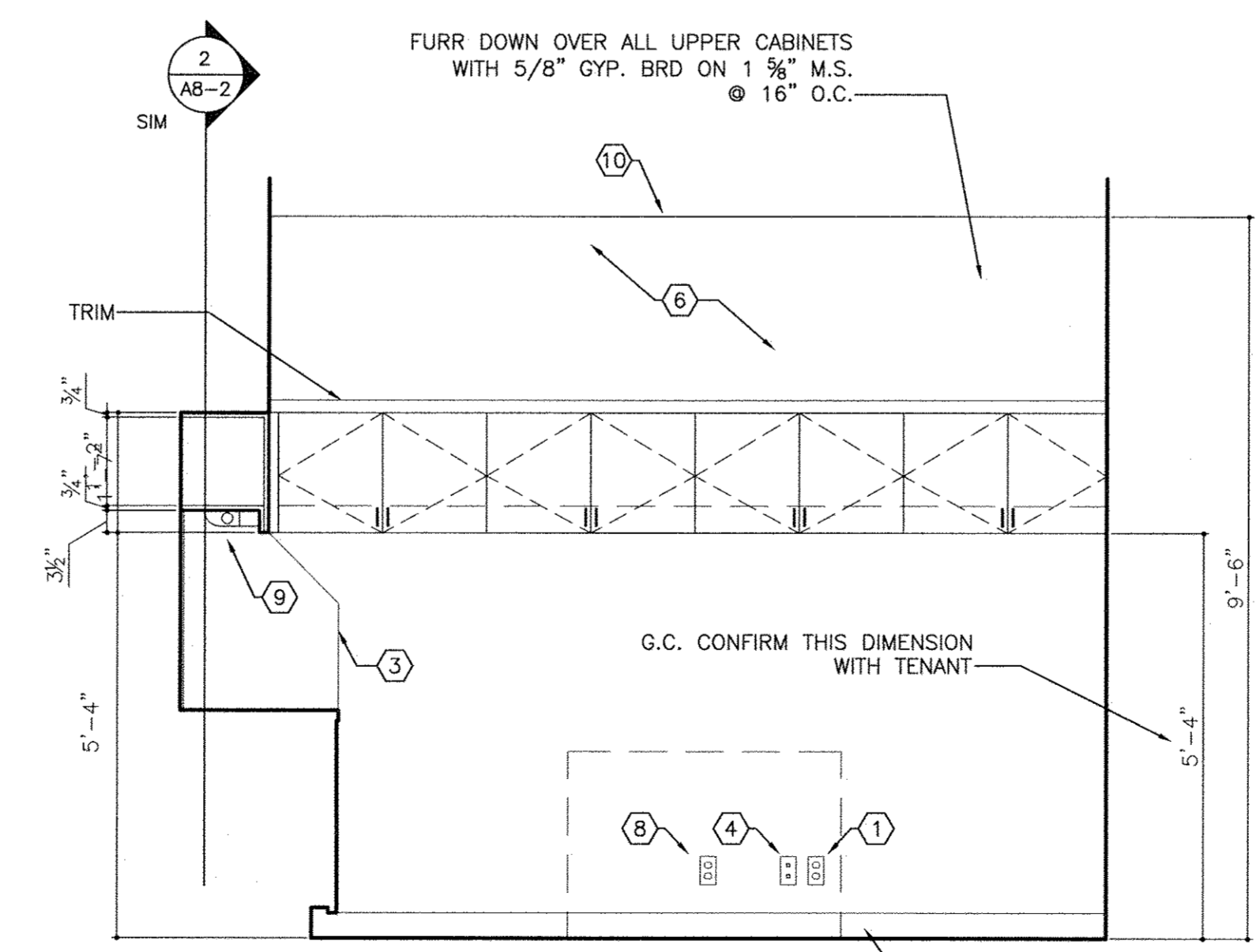
GENERAL NOTES - CABINET CONSTRUCTION

- ALL CABINETS TO HAVE PLASTIC LAMINATE EXTERIORS WITH MELAMINE INTERIORS.
- ALL CABINETS TO BE CONSTRUCTED FOLLOWING AWWI QUALITY STANDARDS.
- ALL TOE BOARDS TO BE PRESSURE TREATED.
- ALL CABINET BODY MEMBERS TO BE 3/4" MELAMINE, BACKS TO BE 1/4" MELAMINE.
- ALL ADJUSTABLE SHELVES TO BE 3/4" MELAMINE WITH MATCHING PVC EDGE BANDING ON 5 MM SHELF PINS @ 32MM O.C.
- CABINET HARDWARE:
 - A: DOOR AND DRAWER PULLS, WIRE PULLS NO. 4484, STANLEY HARDWARE
 - B: HINGES 2 PER LEAF NO. 3703VSB, SELF CLOSING, DOWELED HINGE CUP, BY C*GRASS
 - C: DRAWER GUIDES NO. 6500, C*GRASS
 - D: SHELF PINS 5 MM DIA., 24 MM LONG, NICKEL PLATED, SPACED @ 32 MM O.C.

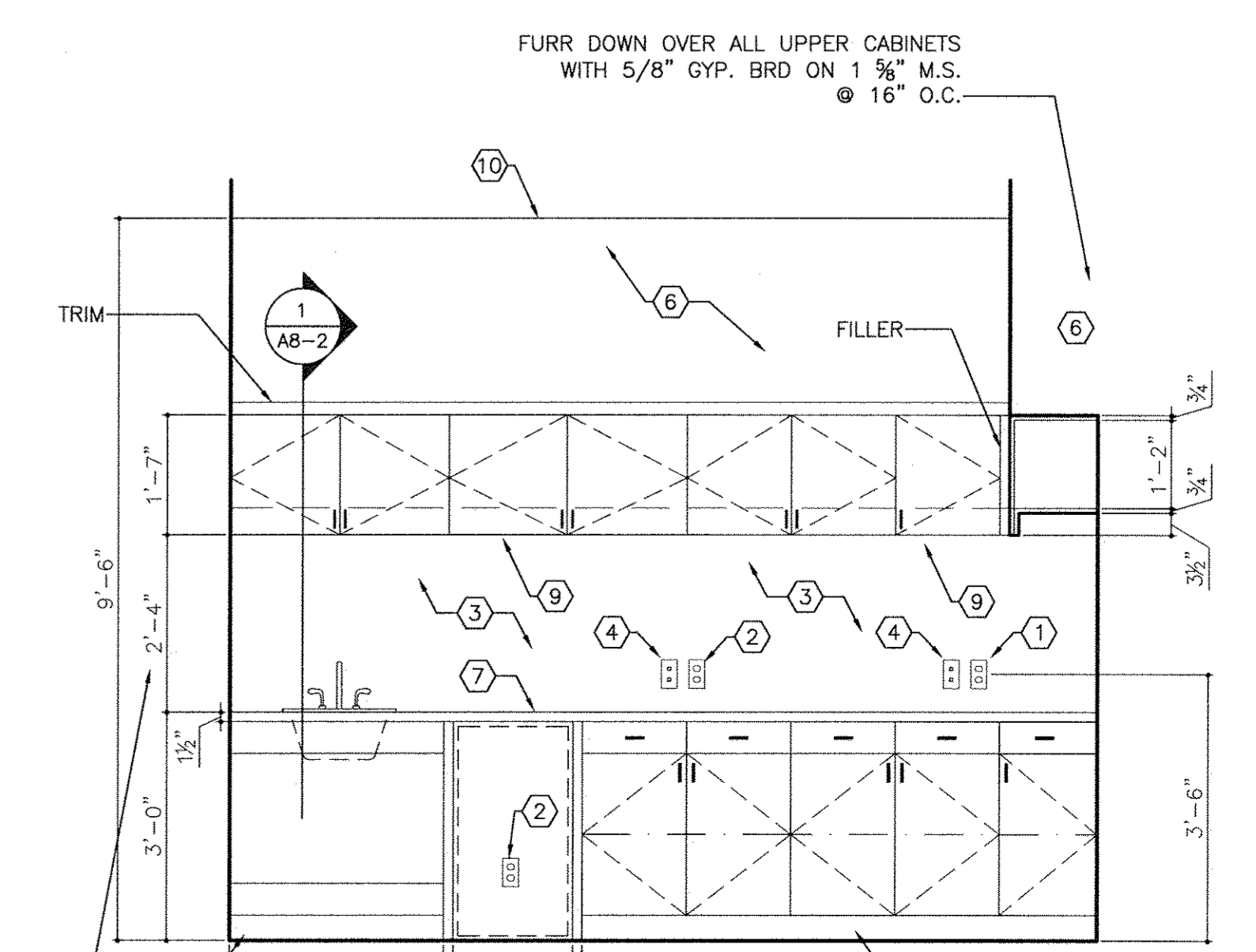
- KEYNOTES**
- RECEPTACLE
 - GFI RECEPTACLE WITHIN 48" OF WATER SOURCE
 - 1/2" PLYWOOD WITH LAMINATED PLASTIC TO MATCH COUNTERTOP
 - PHONE / DATA OUTLET
 - WOOD BASE W/ SHOE. RB6 SPEED BASE THROUGHOUT.
 - FUR DOWN ABOVE OVERHEAD CABINETS WITH 1 5/8" M.S. @ 16" O.C. AND 5/8" GYP. BOARD, PAINT.
 - LAMINATE COUNTERTOP W/ ROLLED LAMINATE EDGE
 - DEDICATED CIRCUIT FOR COPIER
 - UNDER CABINET LIGHTS
 - NEW 2'x2' LAY-IN GRID AND CEILING
 -
 -
 -
 -



C INTERIOR ELEVATION
SCALE: 1/2" = 1'-0"



B INTERIOR ELEVATION
SCALE: 1/2" = 1'-0"



A INTERIOR ELEVATION
SCALE: 1/2" = 1'-0"



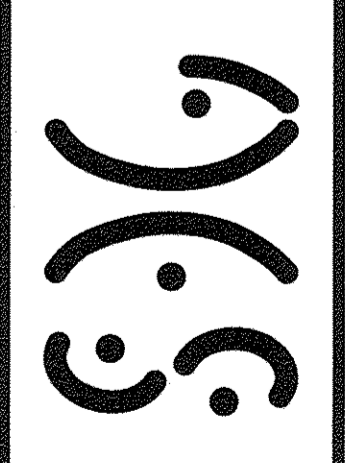
SIGNATURE REQ'D
ENGINEER'S STAMP

RENOVATION FOR SUITE 201 COCA-COLA BUILDING LAGRANGE, GEORGIA

PROJECT TITLE
INTERIOR ELEVATIONS

SHEET TITLE

SMITH DESIGN GROUP, INC.
Suite B
Georgia
307 Church Street
LaGrange
Phone (706) 882-5511
Fax (706) 883-7777



DRAWN JTS
CHECKED GMS
JOB NO. 0803
DATE 10 JAN 2008

SHEET
A8-1