

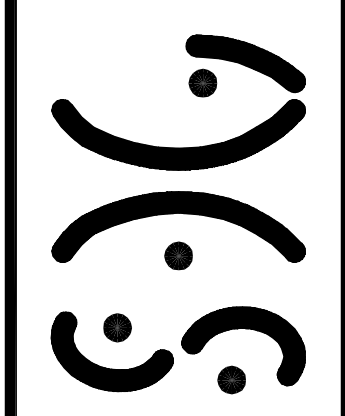


SIGNATURE: REO'D
ENGINEER'S STAMP

PROJECT TITLE
RENOVATIONS TO SUITE 503 BUILDING DRIVE 301 MEDICAL PARK LAGRANGE, GEORGIA FOR MEDICAL PARK FOUNDATION, INC.

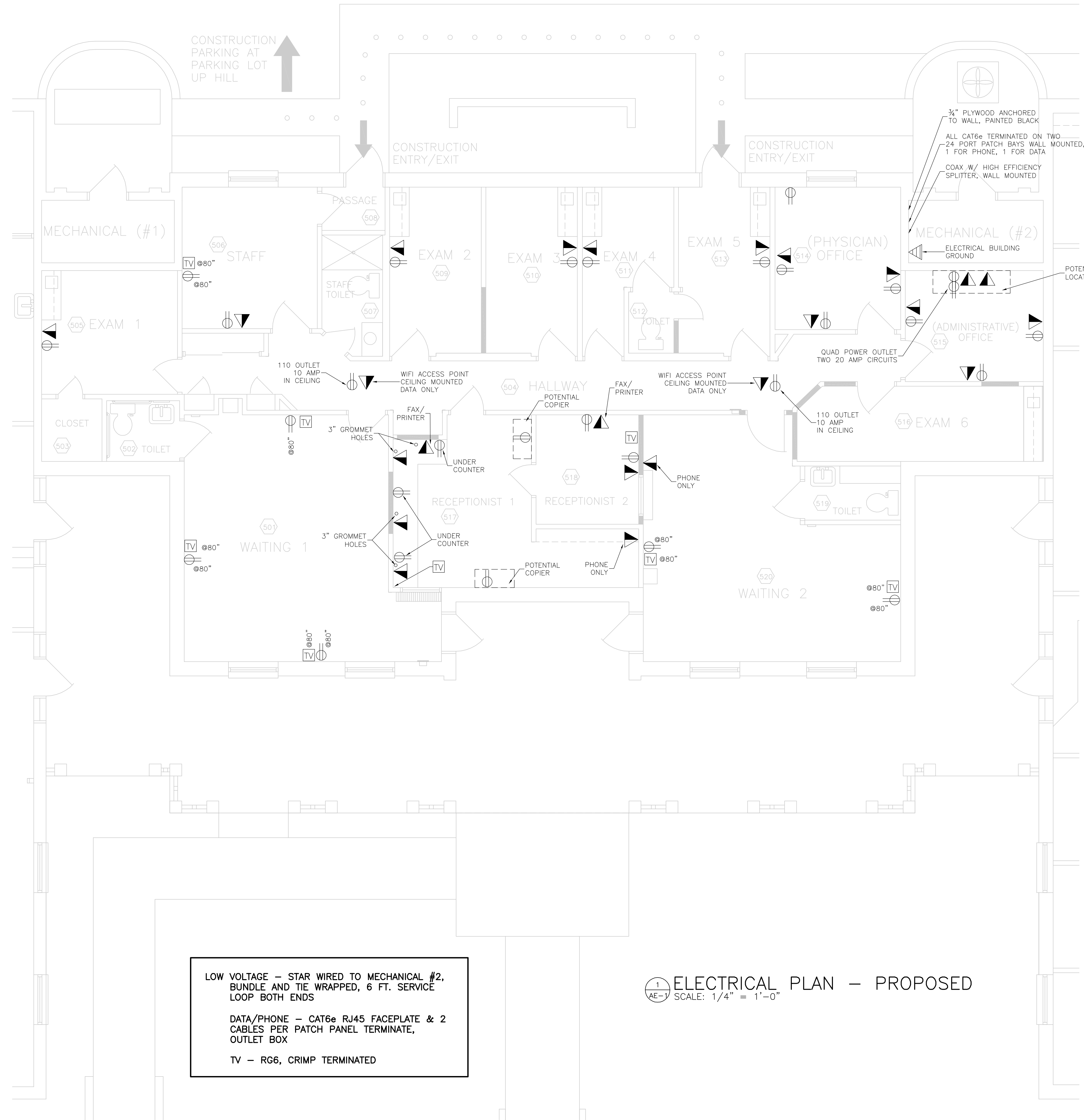
SHEET TITLE
ELECTRICAL PLAN - PROPOSED

SMITH DESIGN GROUP, INC.
307 Church Street
LaGrange, Georgia
Phone (706) 882-5511 Fax (706) 883-7777



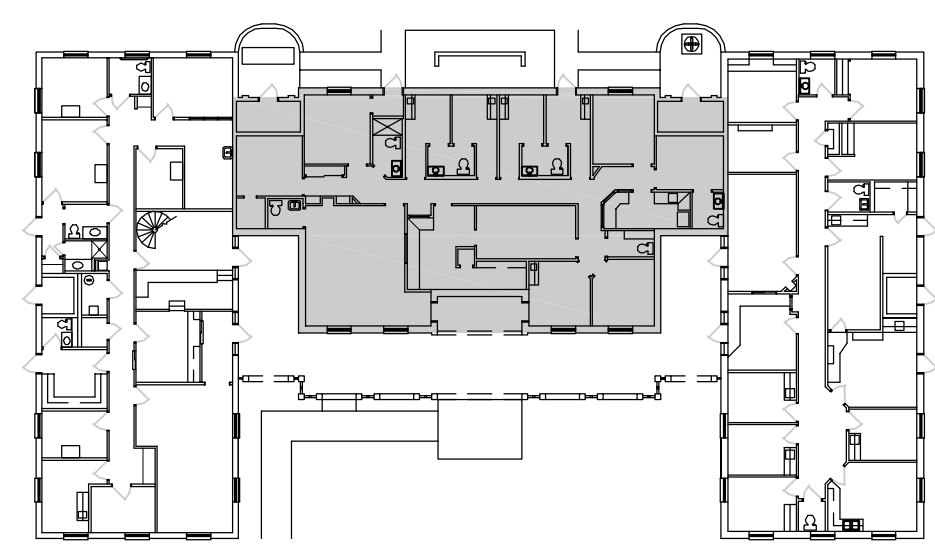
DRAWN ANB CHECKED GMS
JOB NO. 0914
DATE 04 MAY 2009

SHEET
AE-1



NOTE:
LOCATE ALL NEW ELECTRICAL DEVICES SHOWN ON THIS PLAN RECESSED IN EXISTING WALL. REMOVE AND REPAIR EXISTING WALL AS NECESSARY FOR NEW ELECTRICAL DEVICE INSTALLATION.

- LEGEND**
- ▼ PHONE/DATA
 - ⊖ 110 POWER, 20 AMP
 - TV CABLE T.V.



KEYPLAN
NOT TO SCALE

LOW VOLTAGE - STAR WIRED TO MECHANICAL #2, BUNDLE AND TIE WRAPPED, 6 FT. SERVICE LOOP BOTH ENDS

DATA/PHONE - CAT6e RJ45 FACEPLATE & 2 CABLES PER PATCH PANEL TERMINATE, OUTLET BOX

TV - RG6, CRIMP TERMINATED

1 ELECTRICAL PLAN - PROPOSED
SCALE: 1/4" = 1'-0"