

DATE	DESCRIPTION	BY	CHK
02/15/11	FOR PERMIT & CONSTRUCTION		
	DESIGN CHANGE		

**PRELIMINARY DRAWING**

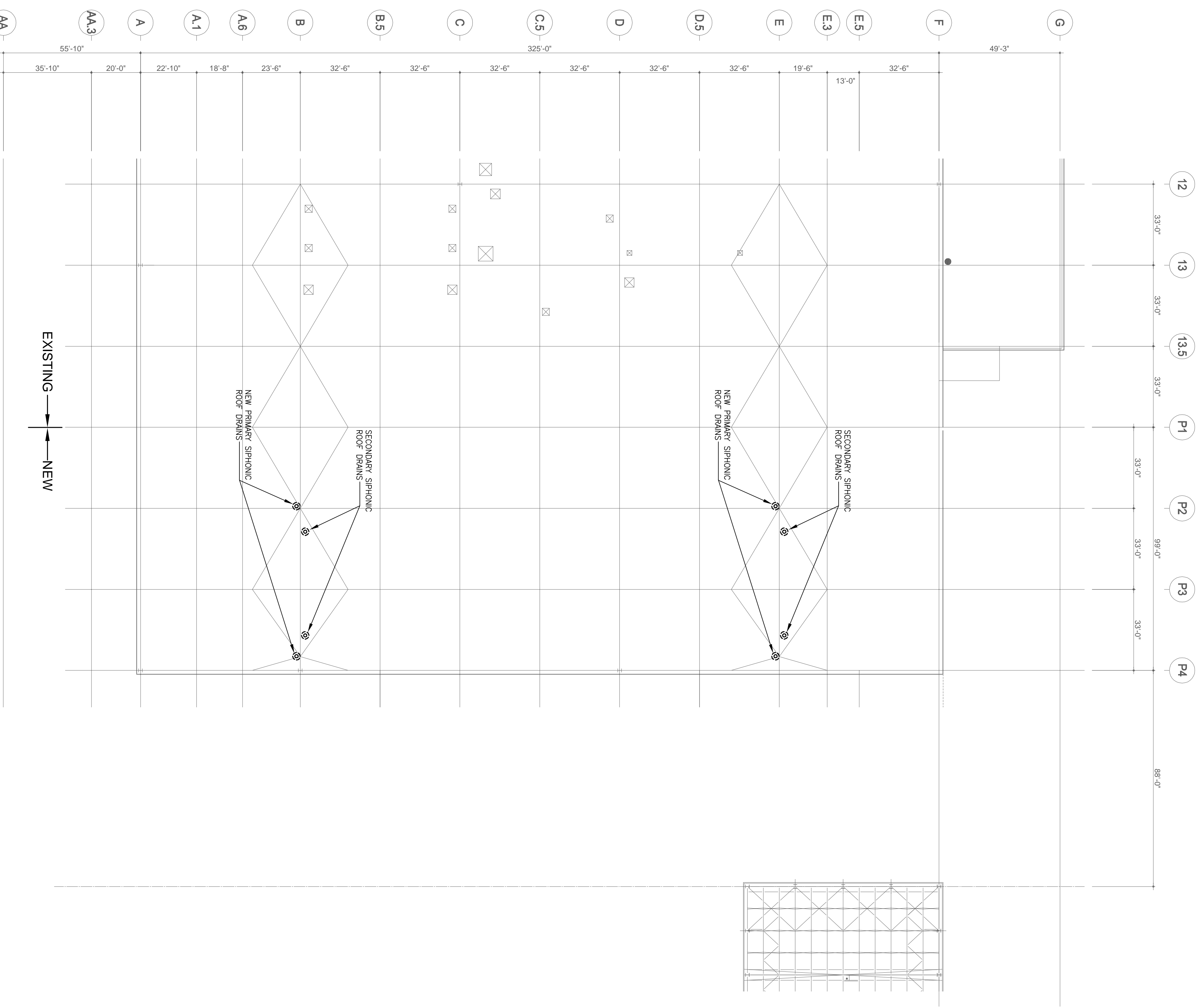
Sheet no: **P-102**

**HYUNDAI AMCO**  
ASSET MANAGEMENT CO., LTD.  
231, Yangsan 2-dong, Seocho-gu, Seoul, Korea  
TEL: 82-2-3484-6000 FAX: 82-2-3484-6279  
http://www.amco.com/eng/engmain.asp

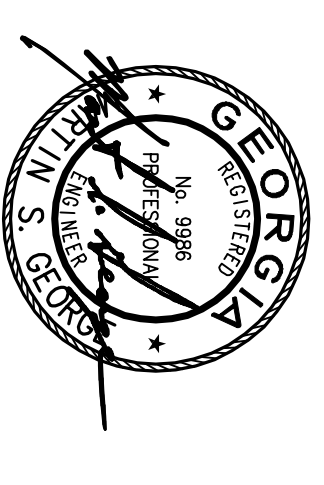
**HANTERIN US Inc**  
Architects & Engineers Co., Ltd.  
1515 Hogsensville Rd #148, LaGrange, GA 30241

**SMITH DESIGN GROUP, INC.**  
307 Church Street, Suite B  
Lafayette, Georgia 30340  
Phone (706) 882-5511  
Fax (706) 882-7777  
www.smithdesigngroup.net

Project No:	718	Revision:	1/24" = 1'-0"
Client:		Scale:	1/24" = 1'-0"
Contract:		Drawn by:	P-102
Proposed:		Checked by:	A
Revised:		Design Date:	



**1 PARTIAL ROOF PLAN - ROOF DRAINAGE**  
P102 SCALE 1/24" = 1'-0"



INDEX	DATE	DESCRIPTION	BY	CHK
0	02/15/11	FOR PERMIT & CONSTRUCTION		
		DESIGN CHANGE		

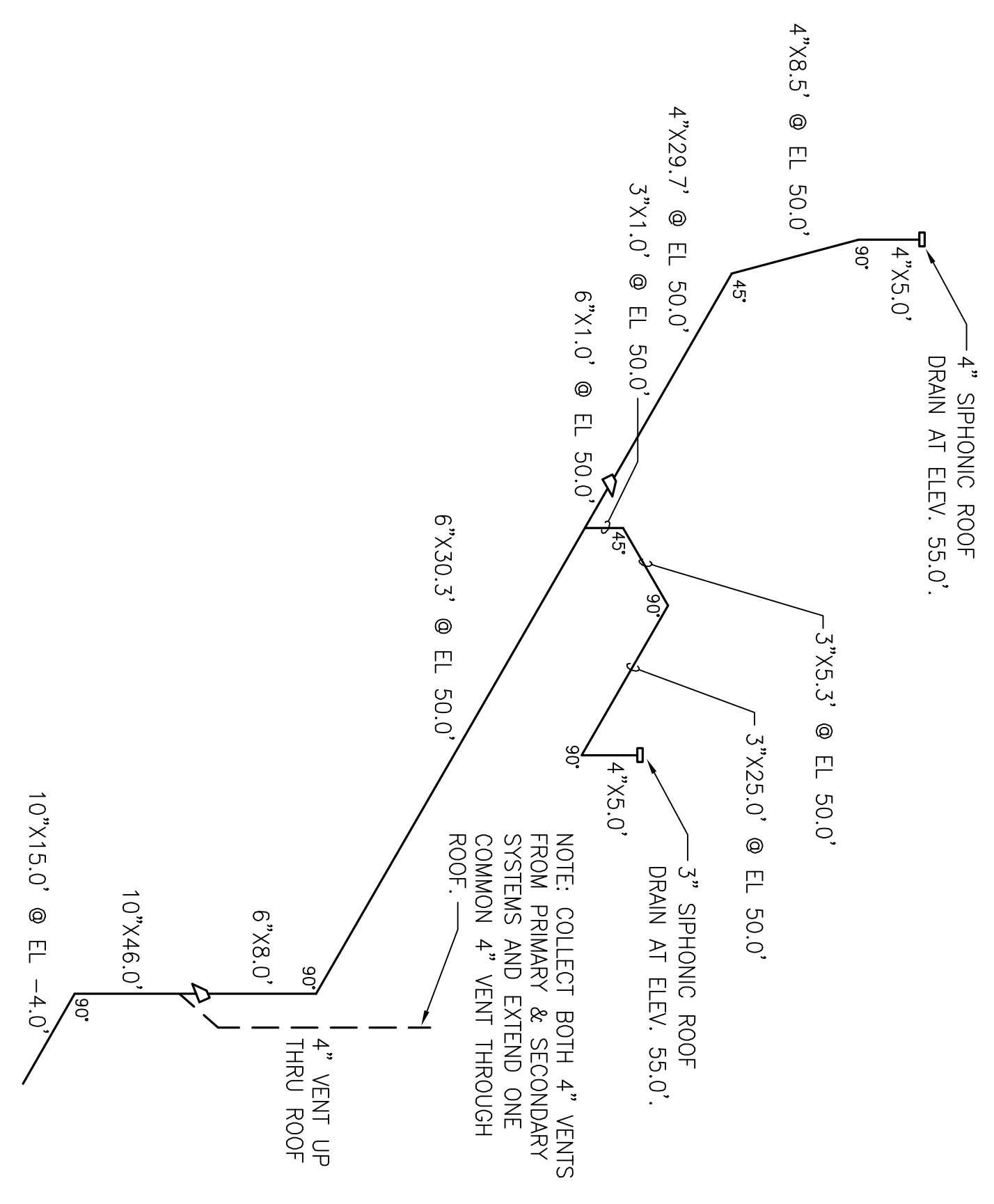
PRELIMINARY DRAWING  
P-110



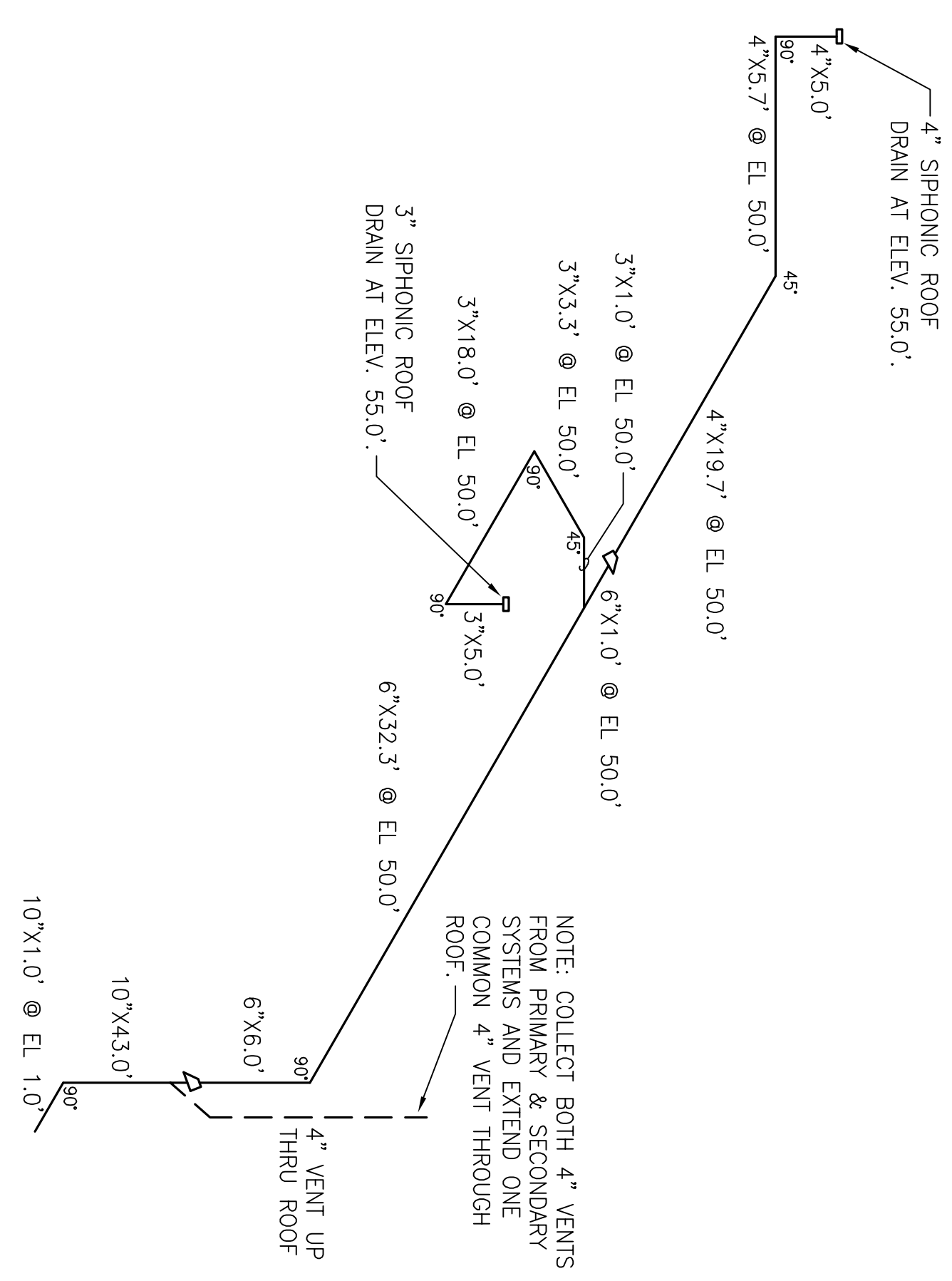
HAANTERIN US Inc  
Architects & Engineers Co., Ltd.  
1515 Hogshead Rd #148, LaGrange, GA 30241

SMITH DESIGN GROUP, INC.  
307 Church Street, Suite B  
Lafayette, Georgia 30340  
Phone (706) 882-5511  
Fax (706) 882-7777  
www.smithdesigngroup.net

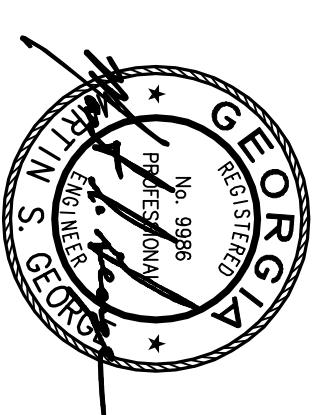
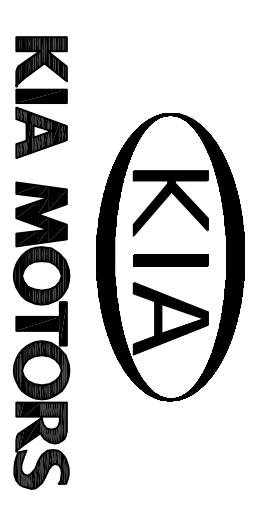
Project No.	718	Construction Documents
Approved For	Printed	
Schematic Design		
Design Development		
Permit		
Final		
Contract		
Provided		
Approved		
Contract Date	None	2011.02.15
Rev No.	P-110	Issue
Revision Date		A



1 ISOMETRIC DIAGRAM - PRIMARY ROOF DRAINAGE SYSTEMS  
P-110/ NOT TO SCALE



2 ISOMETRIC DIAGRAM - SECONDARY ROOF DRAINAGE SYSTEMS  
P-110/ NOT TO SCALE



PROJECT NO.	FP-101
DATE	02/15/11
DESIGN CHANGE	NO
DRN. CHG.	NO
REVISION DATE	NO
REVISION NO.	NO
REVISION DESCRIPTION	NO
APPROVED FOR	PRINT
SCHEMATIC DESIGN	CONSTRUCTION DOCUMENTS
PROJECT	CONTRACTOR
OWNER	CLIENT
DESIGNED BY	DESIGNER
CHECKED BY	CHECKER
DATE	DATE
BY	BY
FOR PERMIT & CONSTRUCTION	FOR PERMIT & CONSTRUCTION

**PRELIMINARY DRAWING**

FP-101

231, Yongeuk 2-dong, Seongdeup-gu, Seoul, Korea  
 TEL: 82-2-584-6400 FAX: 82-2-584-6401  
 E-MAIL: hant@hant.com.hk WWW: www.hant.com.hk

**HANTERIN US Inc**  
 Architects & Engineers Co., Ltd.  
 1515 Hogsenville Rd #148, LaGrange, GA 30241

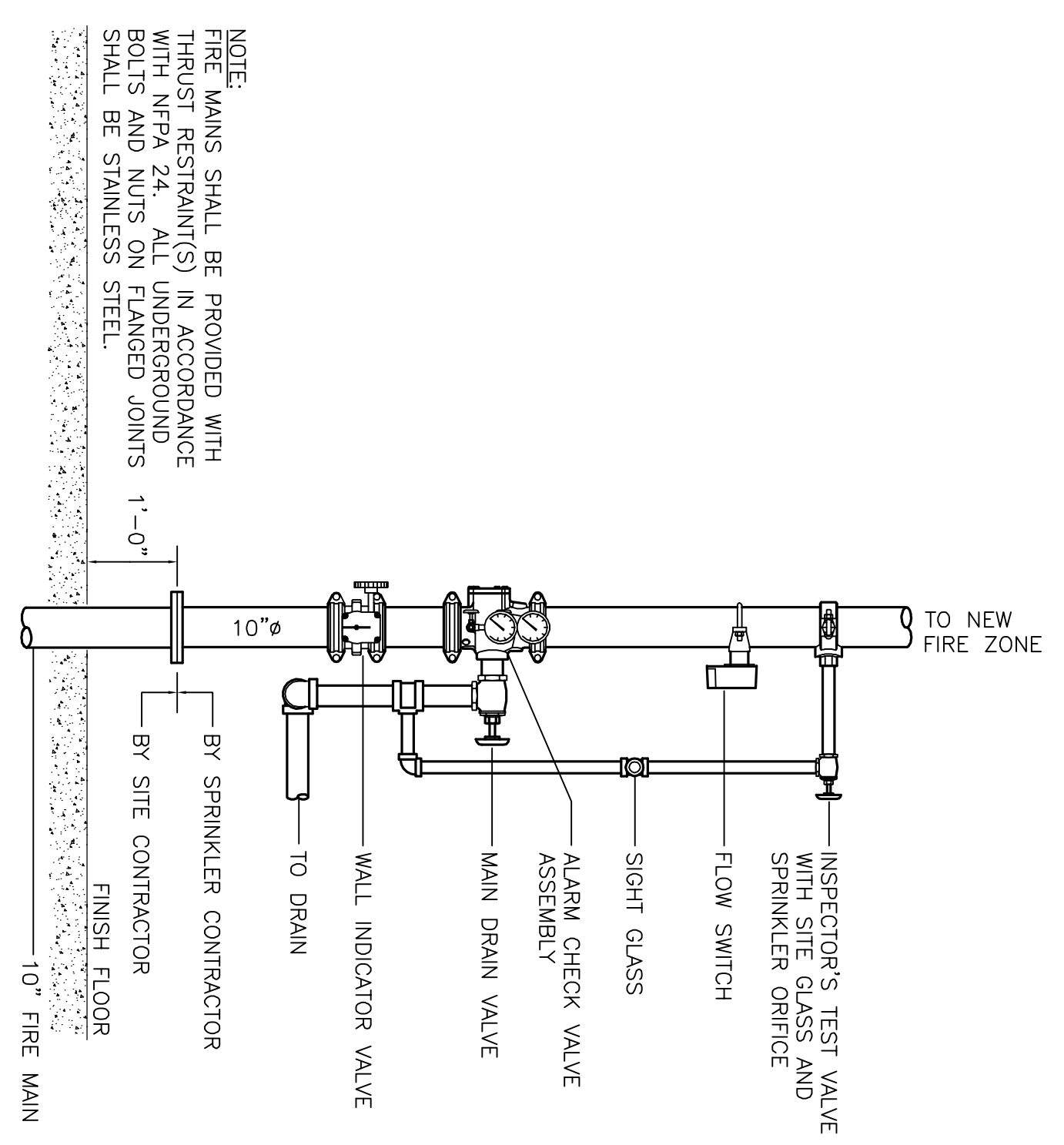
**SMITH DESIGN GROUP, INC.**  
 307 Church Street, Suite B  
 LaGrange, Georgia 30240  
 Phone (706) 882-4511  
 Fax (706) 882-7777  
 www.smithdesigngroup.net

**HYUNDAI AMCO ASSET MANAGEMENT CO., LTD.**

**PARTIAL FLOOR PLAN - FIRE SPRINKLERS**

SCALE: 1/24" = 1'-0"

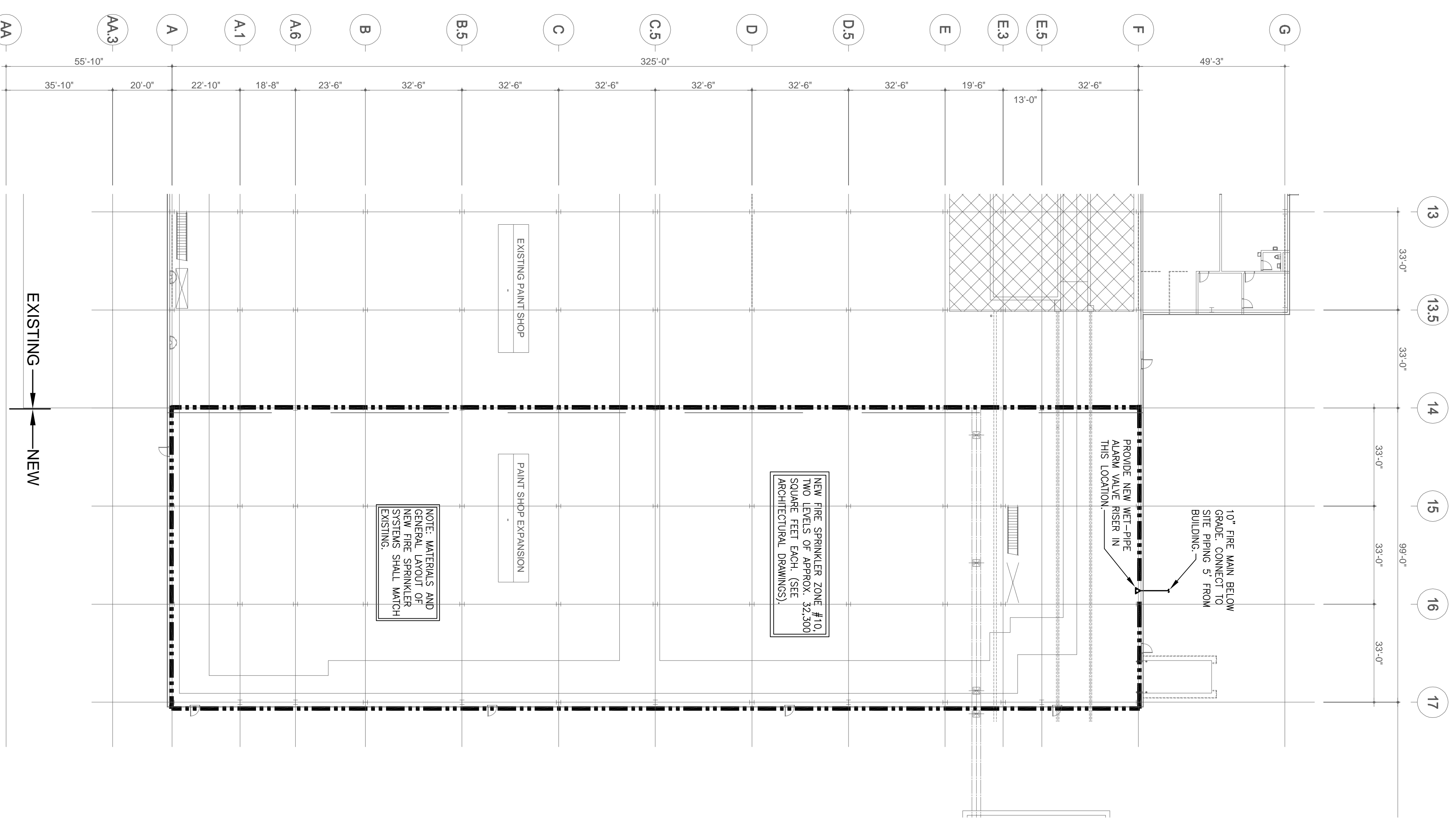
NO. 9988  
 STATE OF GEORGIA  
 LICENSE NO. 11111  
 DATE 12/15/11



**2 DETAIL - SPRINKLER RISER ASSEMBLY**  
 FP101/ NOT TO SCALE

**FIRE SPRINKLER SYSTEM GENERAL REQUIREMENTS**

Automatic sprinkler coverage shall be provided throughout the building in accordance with the requirements of NFPA-13. In general, automatic sprinkler protection shall be provided throughout the new plant area with a wet pipe sprinkler system complying with the requirements of NFPA-13 and FM Global Underwriters. Automatic sprinkler protection shall be provided throughout the new expansion area, on wet-pipe sprinkler systems designed for 0.60 gpm per sq. ft. over the most remote 4,000 sq. ft. areas after reserving 300 gpm for hose streams at the base of the sprinkler riser. FM approved, ELO 11.2 K Factor, or larger, 280°F rated heads shall be used on maximum 100 sq. ft. spacings. Area of coverage for any individual sprinkler zone riser shall be limited to a maximum of 40,000 square feet. Automatic sprinkler protection should be provided below all suspended ceilings or shielded areas, below all ductwork larger than 48 in. wide and in all concealed areas and pits. Sprinkler system operating pressures shall be a minimum of 100 psi at the base of the sprinkler riser. Hose stations shall be provided throughout the new expansion area, spaced a maximum of one every 10,000 sq. ft., supplied by a connection below the control valve for the ceiling sprinkler system or interconnected with adjacent ceiling sprinkler systems, so that when ceiling sprinkler systems are impaired, the hose stations will remain in service. These stations shall be inspected and maintained in accordance with NFPA-13.



**1 PARTIAL FLOOR PLAN - FIRE SPRINKLERS**  
 FP101/ SCALE: 1/24" = 1'-0"