

**SMITH DESIGN GROUP, INC.**

307 Church Street Suite B  
LaGrange, Georgia 30240  
Phone (706) 882-5511 Fax (706) 883-7777

**Long Cane Fire Station  
Bid Package No. 1  
August 4, 2010  
Architect's Project No. 1009**

**ADDENDUM NUMBER ONE**

**The Bidding Documents are modified as follows:**

**PART 1.00 DRAWINGS**

**1.01 Sheet S4-1**

**A. The deflection requirements for the Pre-Engineered Metal Building are to be as described on Sheet S4-1.**

**1.02 Sheet A1-2**

**A. Please see attached Sheet A1-2 for additional dimensions of the building.**

**PART 2.00 - PROJECT MANUAL**

**NO ITEMS INCLUDED**

**PART 3.00 - ADDENDA**

**NO ITEMS INCLUDED**

**PART 4.00 – APPROVED MANUFACTURERS**

**NO ITEMS INCLUDED**

**PART 5.00 - ATTACHMENTS**

**5.01 Sheet A1-2 24" x 36" dated 03 August 2010**

**PART 6.00 – GENERAL CLARIFICATIONS**

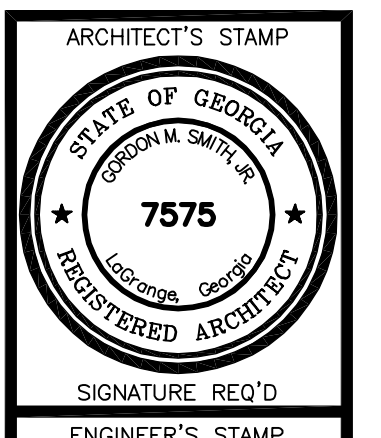
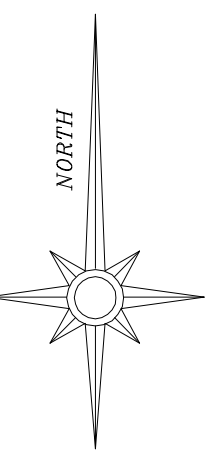
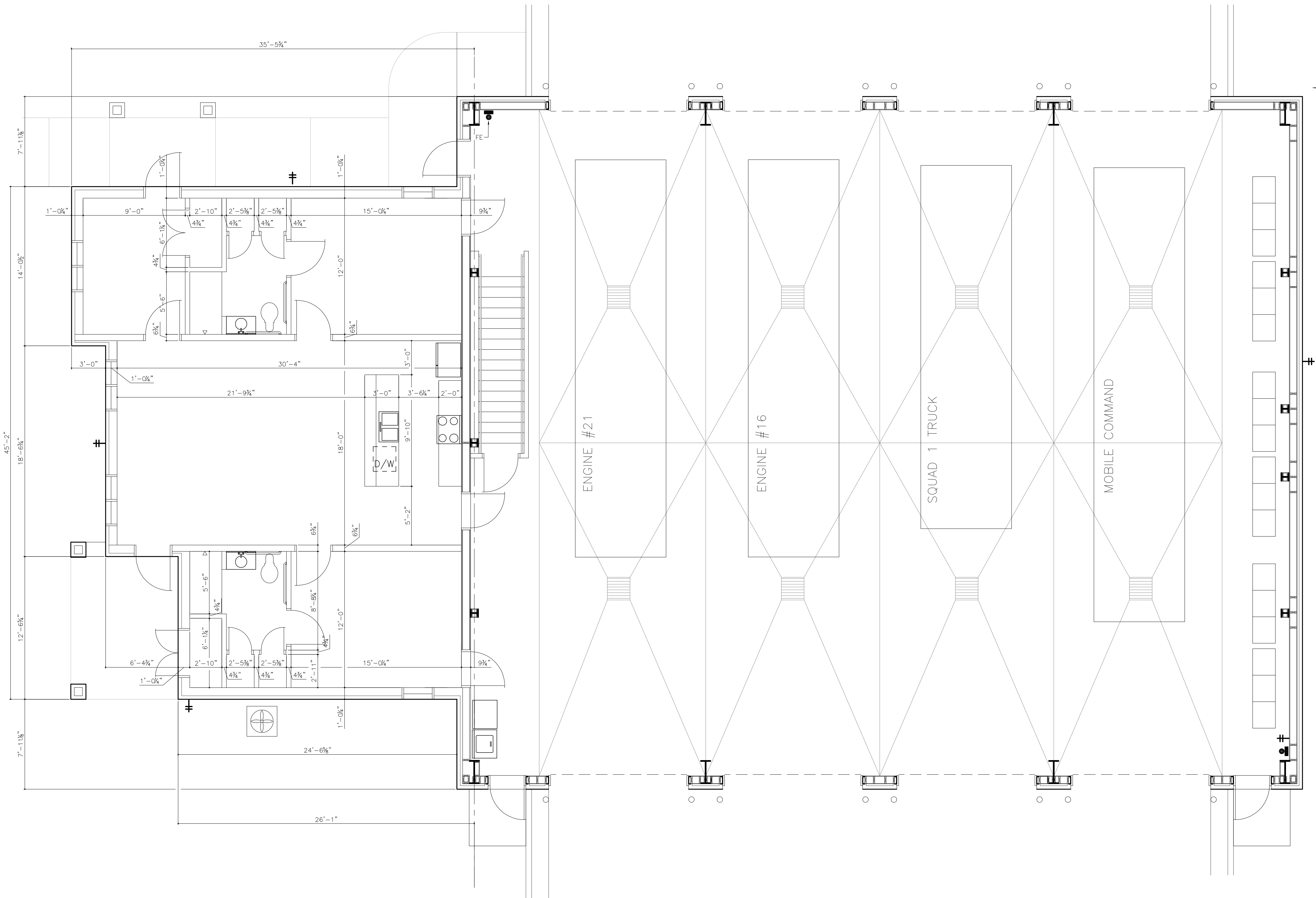
**6.01 Bid Package No. 1 – Pre-Engineered Metal Building**

**Troup County is bidding the Pre-Engineered Metal Building Package only at this time. Troup County has not decided at this time if the remaining project will be bid to general contractors or if Troup County will self perform remaining portions of the work. Approximate budget for this package is less than \$100,000.00. The County has not bid or awarded any other portions of this project at this time.**

**There is no Pre-Bid conference for this Bid Package No. 1.**

**AD1-1\***

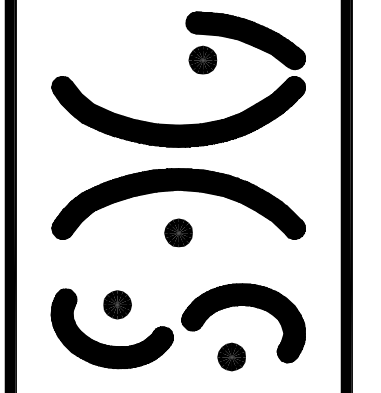
**END OF ADDENDUM NO. ONE**



PROJECT TITLE  
**TROUP COUNTY FIRE DEPARTMENT  
 LONG CANE STATION #4  
 LAGRANGE, GEORGIA**

SHEET TITLE  
**FLOOR PLAN  
 DIMENSION PLAN**

**SMITH DESIGN GROUP, INC.**  
 Suite B  
 Georgia  
 307 Church Street  
 LaGrange  
 Phone (706) 882-5511 Fax (706) 883-7777



DRAWN ANB CHECKED GMS  
 JOB NO. **1009**  
 DATE **03 AUG 2010**

SHEET  
**A1-2**

**FLOOR PLAN — DIMENSION PLAN**  
 SCALE: 1/4" = 1'-0"

